

Kelvin Hughes Navigation ECDIS

Safe navigation in all weather conditions

The Electronic Chart Display and Information System (ECDIS) is engineered for seamless operation, offering operators a clear and intuitive display of essential information. This sophisticated decision-making tool significantly enhances safety and efficiency at sea.

Features

- Designed for seamless integration in both existing vessels and new constructions
- Operates on a unified display system, incorporating all market-leading software functionalities for efficient navigation
- Utilises the most recent International Hydrographic Organization standards to ensure up-to-date and accurate information
- Fully compatible with the Kelvin Hughes navigation radar display and bridge systems, offering a cohesive and streamlined user experience
- Provides detailed information such as anchorage area names, landmarks, lights, and buoys, improving both efficiency and safety

Benefits

- **Reduced Waiting Time:** The new software architecture minimises delays, allowing for quicker access and use.
- **Enhanced Efficiency and Safety:** The system's design and features significantly improve operational efficiency and navigational safety
- **Greater Consistency:** Improved display consistency of ENC data reduces alarm fatigue, making it easier to focus on critical alerts
- **Standards Compliance:** Fully compliant with the new IEC 61174 Edition 4 standard, ENC S-57 and S-63 formats, and C-Map chart formats, ensuring up-to-date and accurate information

Kelvin Hughes Navigation ECDIS

Safe navigation in all weather conditions

Proven Expertise

With over 70 years of experience as a trusted supplier of radar solutions, HENSOLDT UK brings unparalleled expertise to the maritime industry, ensuring confidence and peace of mind for ship operators.

Cost-Effective Ownership

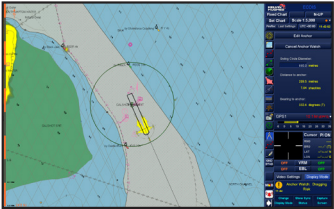
Advanced solid-state radar technology not only ensures exceptional performance in all weather conditions, but also enables cost-effective ownership offering a reliable and low-maintenance radar system.

24/7 Service and Support

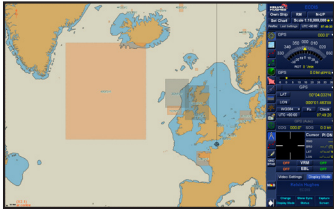
We provide 24/7 service and support, with timely resolution and expert guidance. Our global service network and remote support capability ensure that we are always available to assist you.



Look Ahead



Anchor Watch



AIO (via C-Map CAES)



Route Planning

System Features

- Look ahead (marker and depth areas relevant to the ships course at an adjustable time period)
- Anchor watch (visual and audible alarm of actual position in relation to swing circle)
- Anchor dragging risk (notifies if the anchor may be dragging, exceeding the IEC 61174 standard)
- Navtex compatibility (removes need to print messages as they can now be displayed on screen)
- Maximise chart area (provides the ability to hide the menu side bar)
- Best scale option (automatically selects the best chart viewing scale)
- AIS and radar target layers (supports additional layers)
- AIO (via C-Map CAES) display
- One click chart updates and permit renewal
- Remote diagnostics
- Improved route planning tools (this enables detailed passage plans to be exported to .pdf)
- ENC installation x2 speed of previous software
- Chart redraw when altering the zoom level is almost instantaneous with no black screen



Subject to change without notice.
© 2024 HENSOLDT UK.
HENSOLDT, its logo and the product
names are registered trademarks.
All rights reserved. // 2024 English - Issue 2

HENSOLDT UK
info@hensoldt.net
www.uk.hensoldt.net

Detect and Protect.